

Functional Tips for Print Envoy



This month's tip for getting more from your Print Envoy implementation!

Print Courier for Multiple Print Engines

-By Olivia Johnson Olivia.Johnson@cloudinventory.com

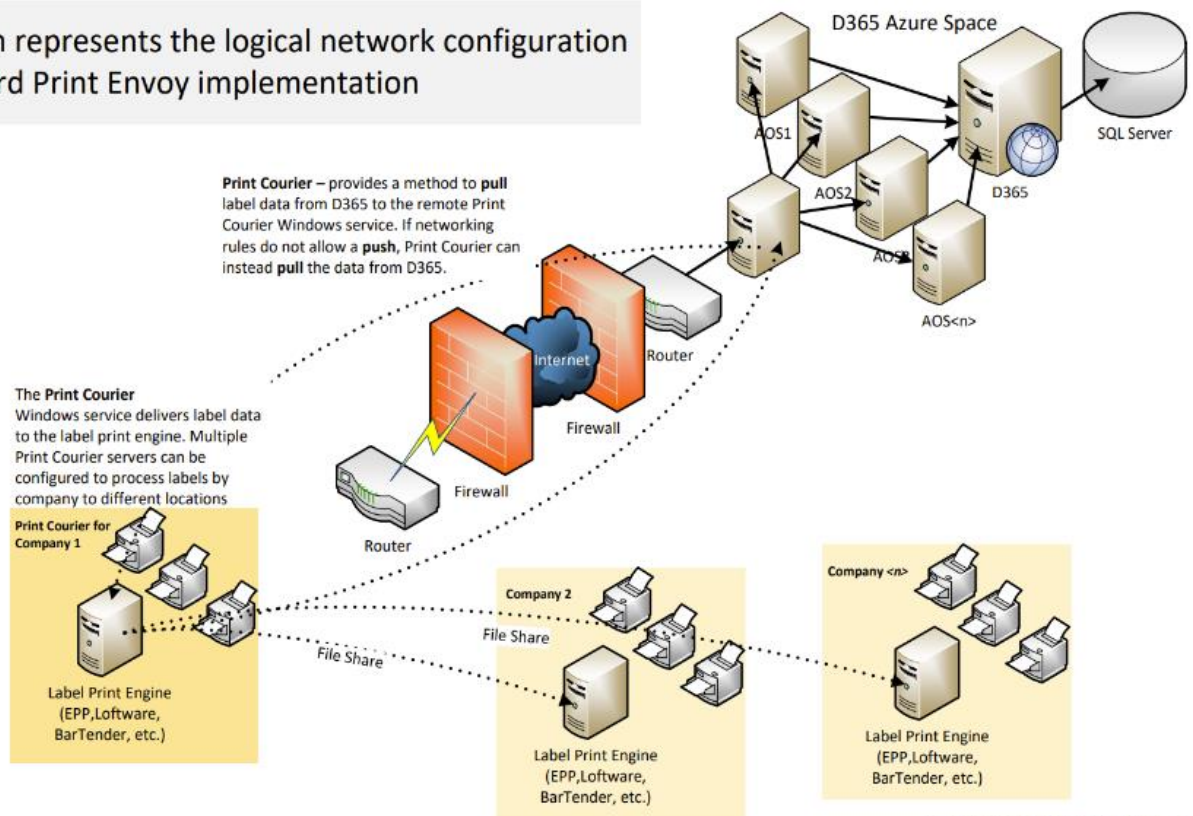
In this month's Functional Tips for Print Envoy, we are going to talk about configuring Print Courier to print labels through multiple Label Print Engines, including scenarios where you are using two (or more) separate label print engines on separate servers, and scenarios in which you want to print through multiple instances of the same Label Print Engine from the same instance of D365.

The critical pieces for routing Print Courier appropriately include:

1. The number of Print Courier instances you are running
2. The number of separate Label Print Engine servers you want to simultaneously print labels to from your D365 instance
3. The "Company" setting on your Print Courier configuration file(s)
4. The Drop Folder/printer association in Print Envoy within D365

Method 1 – One Print Courier, Multiple Label Print Engines/Servers

This diagram represents the logical network configuration for a standard Print Envoy implementation



Let's configure one Print Courier instance to drop label data files to multiple separate servers. In this configuration, Print Courier delivers label files to separate drop folders on its local server, which are connected via fileshare to other servers on your network running separate Label Print Engines. Because the Drop Folder routing is determined in Print Envoy based on the Printer selected, this method allows for either manual designation or automatic designation via complex Printer Selection rules to determine which drop folder the file will be routed to, and subsequently, which label print engine server will be used.

Print Server Drop Folders

Standard view ▾

Filter

<input type="radio"/>		Drop Folder Name	Drop Folder	Label Server Type	Site
<input checked="" type="radio"/>		AKSH086378B	T:\MyCompany\Share\PrintCourier\LabelFileDrop\AKSH086378B	Bartender ▾	
<input type="radio"/>		AKSH087779B	T:\MyCompany\Share\PrintCourier\LabelFileDrop\AKSH087779B	Bartender	
<input type="radio"/>		AKSH67YYULW	T:\MyCompany\Share\PrintCourier\LabelFileDrop\KSH67YYULW	Loftware	

I have three label print engine servers, two with Bartender and one with Loftware. First, I need to create file shares for each of these on the server which is hosting Print Courier. I have created and shared them at T:\MyCompany\Share\PrintCourier\LabelFileDrop\[ServerName], and defined each of these drop folders in Print Envoy. By assigning the Label Server Type, I am also defining the filetype that Print Envoy will generate my label files in.

Printers

Standard view ▾

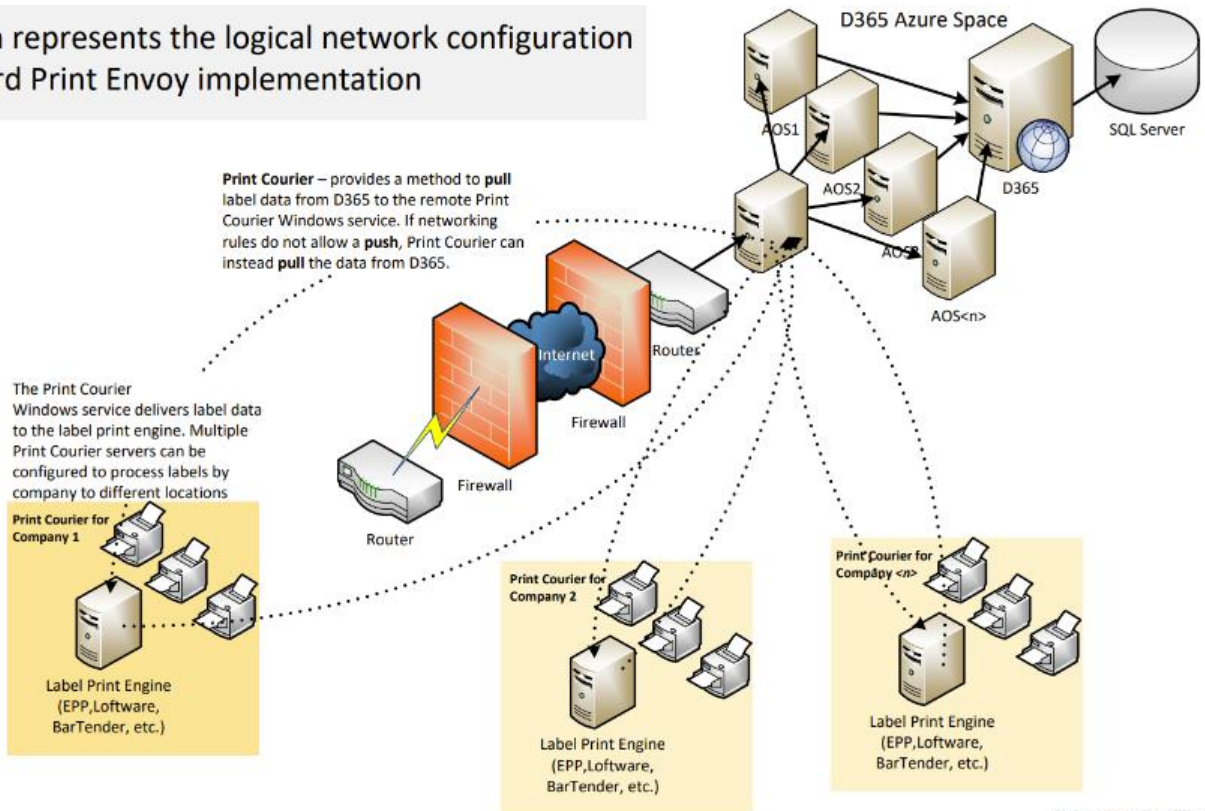
Filter

<input type="radio"/>		Printer Id	Printer Name	Site	Warehouse	Drop Folder Name	Printer Type
<input checked="" type="radio"/>		01	Default Printer			AKSH086378B ▾	Default
<input type="radio"/>		02	Dock 1	1	11	AKSH086378B	Default
<input type="radio"/>		03	Spools	1		AKSH087779B	Default
<input type="radio"/>		04	FG1			AKSH087779B	Default
<input type="radio"/>		05	FG2			AKSH67YYULW	Default
<input type="radio"/>		06	Receiving			AKSH67YYULW	Default
<input type="radio"/>		07	Packing			AKSH67YYULW	Default

Then, I assign each of my printers to one of these drop folders. I have two printers assigned to BarTender server A, two to Bartender B, and three printers to my Loftware server. Now, when I set up printer rules for printers 01 or 02, the files will be written in Bartender's preferred .dd format and routed to the appropriate drop folder. Likewise, when I use printers 05, 06 or 07, the label files will be written in Loftware's filetype and dropped in the appropriate drop folder.

Method 2 – Multiple Print Couriers

This diagram represents the logical network configuration for a standard Print Envoy implementation



Now, let's configure separate instances of Print Courier installed on each of your Label Print Engine servers. This method is simple and straightforward, and hinges on each Print Courier instance polling label data files from only specific legal entities in D365, with no overlap. For example, Print Courier 1 polls labels from CMPA and CMPB, Print Courier 2 polls labels from company CMPC, and Print Courier 3 polls labels from company CMPD.

Print Courier is configured with the file C:\Program Files\DSI\Print Courier\PrintCourier.exe.config. In the configuration file, we will change the "Companies" value to limit this Print Courier instance's polling scope. If this was my configuration file for Print Courier 1, I would set the "Companies" value="CMPA,CMPB". In my configuration file for Print Courier 2, I would set the "Companies" value="CMPC" and likewise for subsequent instances of Print Courier. Then, any time I generate a label file out of CMPA, the file will be polled by Print Courier 1, and not by Print Courier 2 or 3.

```
<appSettings>
  <add key="Companies" value="USMF,USPI,USP2" />
  <add key="Maximum Polled Labels" value="10" />
  <add key="Poll ScanWorkX" value="Yes" />
  <add key="Poll Print Envoy" value="Yes" />
  <add key="Port" value="20010" />
  <add key="Timeout" value="15" />
  <add key="Dynamics 365 URL" value="URL" />
  <add key="Username" value="USERNAME" />
  <add key="Password" value="PASSWORD" />
  <add key="Secret" value="SECRET" />
  <add key="Azure Active Directory Resource" value="URL" />
  <add key="Azure Active Directory Tenant" value="TENANT" />
  <add key="Azure Active Directory Client App ID" value="CLIENTID" />
</appSettings>
```

I hope this guide helps to clarify the various ways in which Print Courier can be configured to poll and route your label files where you need them. Please reach out to Olivia.Johnson@cloudinventory.com with your ideas and questions on how we can help you get the most out of your Print Envoy implementation.